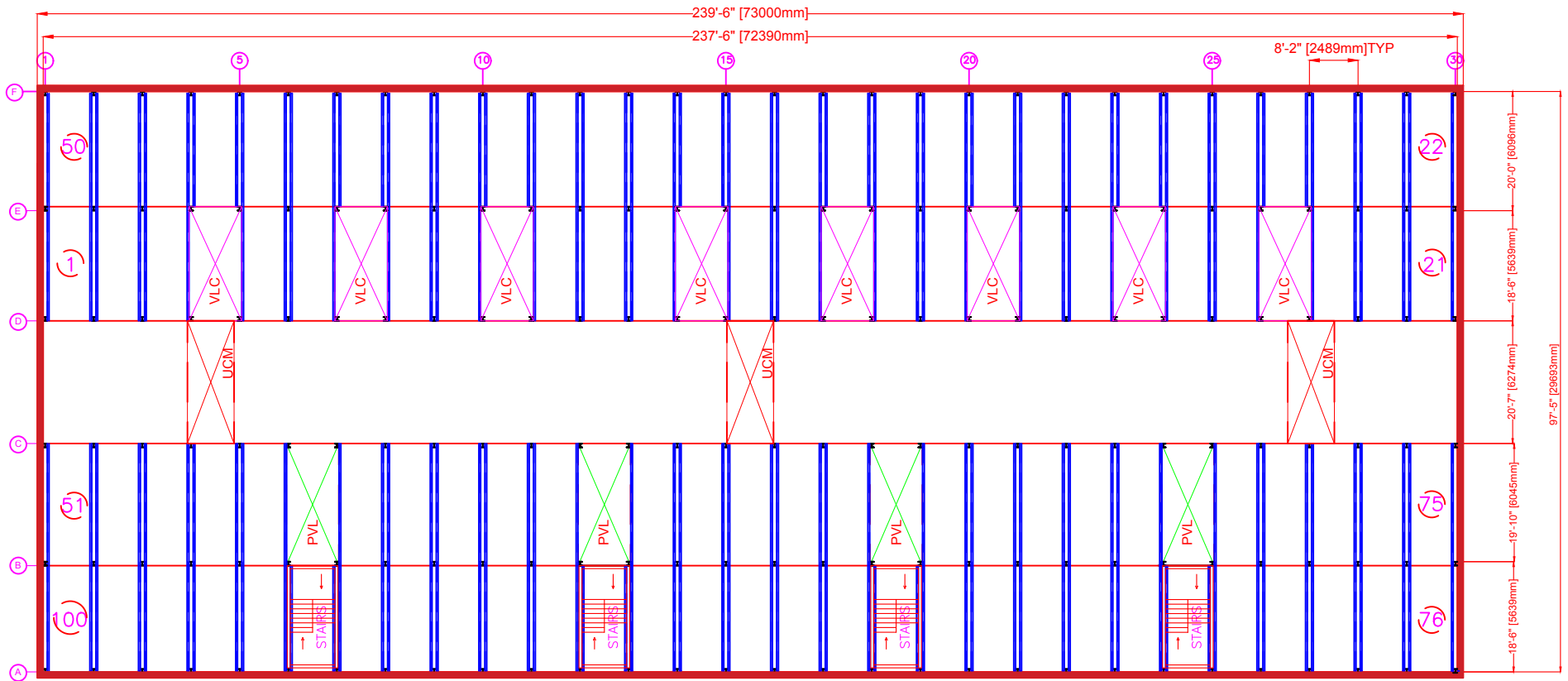


PALLET DIMENSIONS: LENGTH: 19 FEET (5792 mm) WIDTH: 7 FEET (2134 mm) CAR SPECS: HEIGHT: 2000 Kgs HEIGHT: 1900-2100 mm	CONFIDENTIAL <small>THIS PRINT IS THE PROPERTY OF ROBOTIC PARKING SYSTEMS AND MAY NOT BE USED OR REPRODUCED IN ANY MANNER WITHOUT THE WRITTEN APPROVAL OF ROBOTIC PARKING SYSTEMS. PROJECT CODE: RPS1000</small>	DATE: 3/25/19 APPROVED: X	DWG TITLE: ENTRY LEVEL PLAN Project RPS1000 TYPE-1	ROBOTIC PARKING SYSTEMS 12812 N. 60th Street Clearwater, FL 33760 United States of America PH: +1 (727) 538 7275 FAX: +1 (727) 538 1900 www.roboticparking.com
	<small>© COPY RIGHT 2018-2019 ROBOTIC PARKING SYSTEMS</small>	LOCATION: DRAWN BY: YE DATE: X	SHEET: 1 OF 4 A1	



PALLET DIMENSIONS:
 LENGTH: 10 FEET (3052 mm)
 WIDTH: 7 FEET (2134 mm)

CAR SPECS:
 WEIGHT: 2500 Kgs
 HEIGHT: 1500-2100 mm

CONFIDENTIAL
 THIS PRINT IS THE PROPERTY OF ROBOTIC PARKING SYSTEMS AND SHALL NOT BE
 LOANED OR REPRODUCED WITHOUT THE WRITTEN PERMISSION OF ROBOTIC PARKING SYSTEMS.
 ©COPY ROBOTIC 1995-2010 ROBOTIC PARKING SYSTEMS PRIVATE COMPANY

SCALE:
 NTS.

DO NOT SCALE DWG
 ALL DIMENSIONS IN METERS (M)

LEGEND:
 1. PALLET HANDLERS
 2. CAR/PTO CARRIER MODULE
 3. STAIR CARRIER MODULE
 4. VLD LEFT WIPABLE
 5. VLD TERMINAL

DWG TITLE: PVL LEVEL
 Project
 RPS1000 TYPE-1

Location:
 12812 N. 40th Street, Clearwater, FL 33760
 United States of America
 PH: +1 (727) 538 2255 FAX: +1 (727) 538 1900
 www.robotparking.com

DATE: 3/25/19
APPROVED BY: X

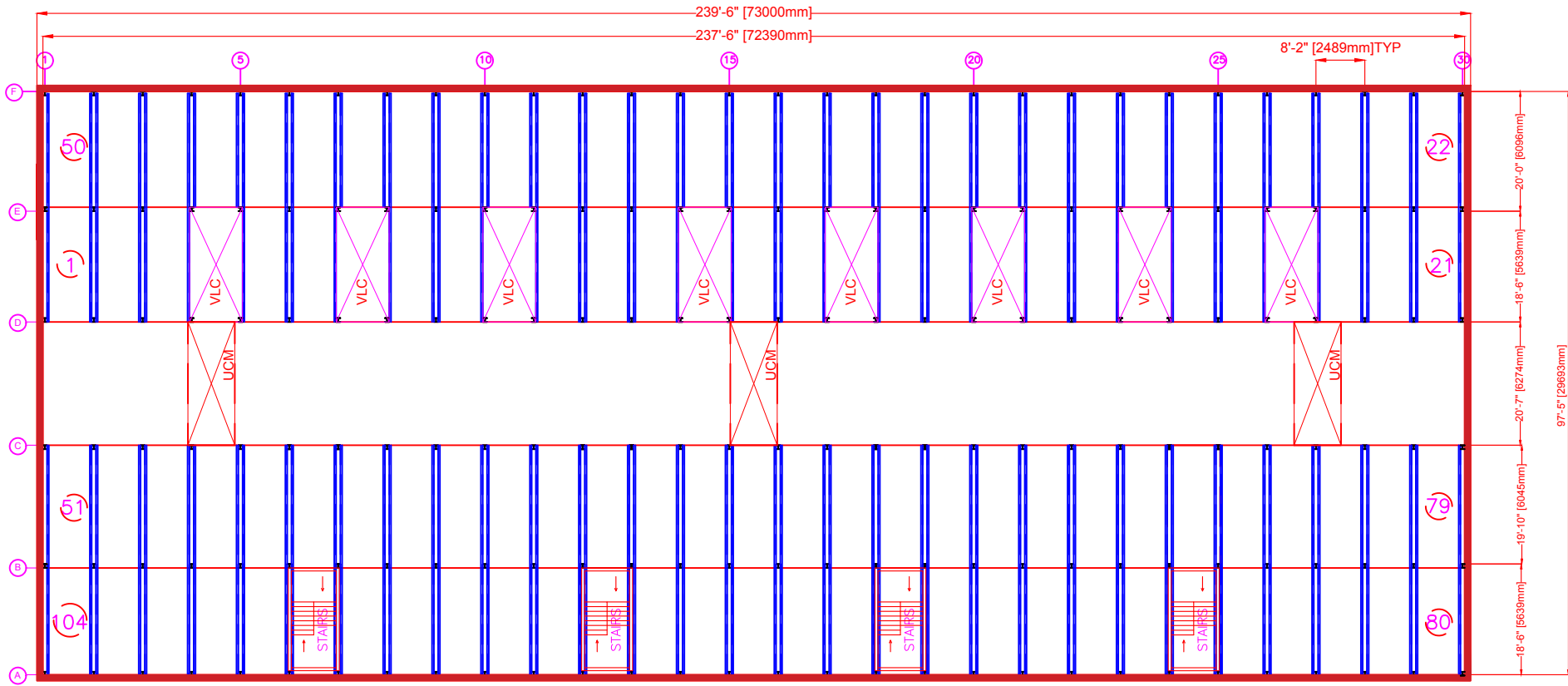
ROBOTIC PARKING SYSTEMS Inc.

P ROBOTIC PARKING

2 SHEET

2 OF 4

A1



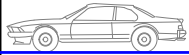
PALLET DIMENSIONS: LENGTH: 19 FEET (5792 mm) WIDTH: 7 FEET (2134 mm) CAR SPEED: HEIGHT: 2000 Kgs WEIGHT: 1500-2100 mm	CONFIDENTIAL <small>THIS PRINT IS THE PROPERTY OF ROBOTIC PARKING SYSTEMS AND MAY NOT BE REPRODUCED OR TRANSMITTED IN ANY FORM OR BY ANY MEANS, ELECTRONIC OR MECHANICAL, INCLUDING PHOTOCOPYING, RECORDING, OR BY ANY INFORMATION STORAGE AND RETRIEVAL SYSTEM.</small> ©COPY ROBOTIC PARKING SYSTEMS 1994-2019 ROBOTIC PARKING SYSTEMS PARKING SYSTEMS	DATE: 3/25/19 APPROVED: X	PROJECT: RPS1000 TYPE-1 DATE: X	ROBOTIC PARKING SYSTEMS 12812 N. 60th Street, Clearwater, FL 33760 United States of America PH: +1 (727) 639 7275 FAX: +1 (727) 638 1900 www.roboticparking.com	DRAWING No. 3 SHEET 3 OF 4
	DO NOT SCALE DIMS <small>All dimensions in inches (mm)</small>	ROBOTIC ADDRESSING: 1. PALLET HANDLING 2. CAR/VEHICLE CHANGING MODULE 3. CAR/VEHICLE STORAGE MODULE 4. VEHICLE CHANGING MODULE 5. VEHICLE STORAGE MODULE	LOCATION: DRAWN BY: YE DATE: X	PROJECT: RPS1000 TYPE-1 DATE: X	ROBOTIC PARKING SYSTEMS 12812 N. 60th Street, Clearwater, FL 33760 United States of America PH: +1 (727) 639 7275 FAX: +1 (727) 638 1900 www.roboticparking.com

TOP OF ROOF

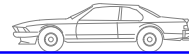
TOP OF RAFTER

6'-0" [1830mm]

PODIUM-9

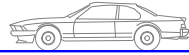


SEDAN CARS-104 SPACES

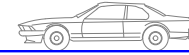


5'-1" [1549.5mm]

PODIUM-8

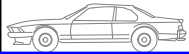


SEDAN CARS-104 SPACES

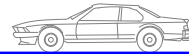


7'-10 1/2" [2400mm]

PODIUM-7

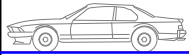


SEDAN CARS-104 SPACES

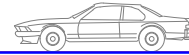


7'-1" [2159mm]

PODIUM-6



SEDAN CARS-104 SPACES



7'-10 1/2" [2400mm]

PODIUM-5



SUV CARS-104 SPACES



8'-10" [2692mm]

PODIUM-4



SUV CARS-104 SPACES



9'-10" [3000mm] 84'-8 1/2" [25819mm]

PODIUM-3



SUV CARS-100 SPACES



8'-10" [2692mm]

PODIUM-2

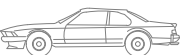


SUV CARS-100 SPACES

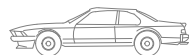
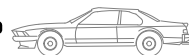


9'-10" [3000mm]

PODIUM-1



LOW CARS-100 SPACES



7'-1" [2160mm]

CONCRETE CEILING

EE Terminal

SUV CARS-40 SPACES

12'-0" [3658mm]

CARS
ENTER / EXIT

A

B

C

D

E

F

18'-6" [5639mm]

19'-10" [6045mm]

20'-7" [6275mm]

18'-6" [5639mm]

20'-0" [6096mm]

97'-5" [29693mm]

PALLET DIMENSIONS:
LENGTH: 10 FEET(3050 mm)
WIDTH: 7 FEET(2134 mm)

CAR SPACES:
WEIGHT: 2000 Kgs
HEIGHT: 1500-2100 mm

CONFIDENTIAL

THIS PRINT IS THE PROPERTY OF ROBOTIC PARKING SYSTEMS AND MAY NOT BE REPRODUCED OR TRANSMITTED IN ANY FORM OR BY ANY MEANS WITHOUT THE WRITTEN APPROVAL OF ROBOTIC PARKING SYSTEMS.

©COPY RIGHTS 1994-2019 ROBOTIC PARKING SYSTEMS. PATENTS PENDING.

NAME
NTS.

DO NOT SCALE DWG
ALL DIMENSIONS IN MILLIMETERS

REVISIONS:
1. PALLET HANDLERS
2. LOW LIFT CARTER WHEELS
3. LOCAL CUSTOMER WHEELS
4. LOCAL LIFT TERMINAL

DWG TITLE SECTION
Project
RPS1000 TYPE-1

Location:
DRAWN BY YE
DATE 3/25/19
APPROVED X
DATE X

ROBOTIC PARKING SYSTEMS
INC.

12812 N. 60th Street, Clearwater, FL 33760
United States of America
PH: +1 (727) 538-7275 FAX: +1 (727) 538-1900
www.roboticparking.com

P
DRAWING No
4
SHEET
4 OF 4
A1