

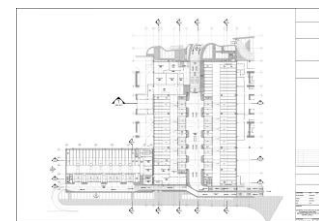


NEW PALACE OF JUSTICE – 2,433 AUTOMATED PARKING SPACES

The New Palace of Justice in Kuwait has a unique and modern design and will be the tallest and largest judicial building in the world. It showcases a 2,433-space automated parking garage designed and built by Robotic Parking Systems.

Once completed, the robotic car park is expected to become the new

Guinness World Record holder for “Largest Automated Parking Facility.” This will be the third such record held by Robotic Parking Systems’ garages.



“ This will be the third such [Guinness World] record held by Robotic Parking Systems’ garages. ”

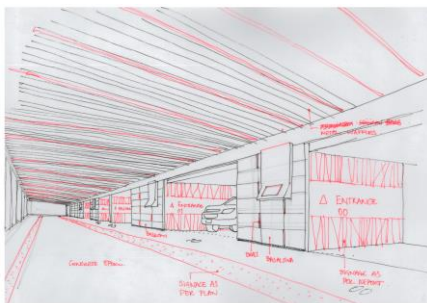
This iconic garage features 18 entry / exit bays with a throughput of 720 cars per hour. That's a capacity to deliver approximately 12 cars each and every minute! Previous third- party certification shows an average single retrieval time of 177 seconds.

The company has been extremely busy manufacturing the 225 machines required for the project. Machines, hoists, pallets, power rails, computers, software and many, many other components will all come together during installation for the final commissioned product.

Manufacturing for this facility has been particularly challenging during the COVID-19 pandemic with shut downs in the US and Kuwait, as well as the additional procedures needed to ensure everyone stays safe.

After each machine is completed and a battery of tests are run, the equipment is shrink wrapped in waterproof material for ocean freight shipment.

We expect to start loading containers for delivery to the site within the next several months.



TECHNICAL MANAGER AND STRUCTURAL DESIGN ENGINEER



Robotic Parking Systems is pleased to announce the appointment of Ahmadreza ("Reza") Sedaghat as Technical Manager and Structural Design Engineer for the firm.

Ahmadreza ("Reza") Sedaghat holds Bachelor's, Master's and PhD degrees in Civil / Structural Engineering. He received his Master's and PhD degrees from University of South Florida and currently is a licensed Professional Engineer in the United States (Florida, Texas and Georgia) and Australia with established NCEES records.

As Technical Manager Mr. Sedaghat is responsible for project management, structural engineering and construction of the patented Robotic Parking Systems. [Learn more.](#)



NORD & ROBOTIC PARKING SYSTEMS HELP DRIVERS PUT CONVENTIONAL PARKING GARAGES IN THE REARVIEW MIRROR.

Do a little research and you'll soon discover something that few people give much thought to—conventional ramp-style parking garages are, well...not too smart. Top on the list of detractors is safety. Not only do parking garages bring cars and people into uncomfortable and often dangerous proximity, but they're also an excellent place for thieves to access unattended vehicles.

These outdated parking garages are also bad for the environment. A typical four-level, 750-space garage is responsible for nearly 4 tons of tire dust and close to 1,000 pounds of brake dust each year, pollutants that make their way into groundwater, the air, and our lungs. On top of that are the millions of miles logged annually as drivers around the world cruise these roads to nowhere, spewing uncountable

tons of exhaust as they go.

Royce Monteverdi, chief executive officer of Robotic Parking Systems, Inc., designed a better automated parking alternative. One of the products he relies on to get the job done? Gearboxes from NORD DRIVESYSTEMS®. "We've been relying exclusively on NORD for our power transmission needs since 1999 and have never had a failure," he says.

[Read more](#) about Robotic Parking Systems and NORD.



ON THE WEB

PARK IT HERE BLOG

The Park It Here blog explores ways that Robotic Parking Systems technology might assist city planners, architects, civic groups, developers, environmentalists and other innovative thinkers seeking to enrich our cities. [Learn more.](#)

FACEBOOK

[Find us on Facebook.](#) You'll have access to photos, videos and up-to-date news on Robotic Parking Systems.



YOUTUBE

Our [YouTube channel](#) contains numerous videos of the Robotic Parking System.

TWITTER

Robotic Parking Systems create more space for design and development. [Follow us on Twitter.](#)

NEW ROBOTICPARKING.COM

We hope you'll visit our newly revised web site, [roboticparking.com](#). The site contains pages and pages of product, technical information, tools, photos, videos, brochures and more. We're also showing off a new logo. Take a look so you'll recognize our new appearance in the future!

STAY SAFE!

We hope you and your family are well and safe during these unprecedented times!

REFERENCE:

WARLICK / HALL ENGINEERING INC

"... highly efficient and effective company with exceptional work ethics."

Douglas Hall, Principal, of Warlick / Hall Engineering Inc stated, "We are an engineering firm that has worked closely with RPS for many years and have always found them to be a highly efficient and effective company with exceptional work ethics.

Their knowledge in their field is above compare; and they are consistently represented as a professional and intelligent company, by bright, quick thinking and exceptionally well organized and polite representatives, with regard to every aspect of their business..."



PARKING FACTS:

"Possibly the first parking restrictions were put in place in Nineveh, the capital of ancient Assyria in c.700 BC. The restrictions are due to their king Sennacherib (704 to 681 BC) and pertained to the sacred main processional way through Nineveh. The oldest parking signs ever discovered read "ROYAL ROAD - LET NO MAN DECREASE IT". The penalty for parking a chariot on this road was death followed by impaling outside one's own home." (Wikipedia)



Robotic Parking Systems, Inc.

12812 60th Street North, Clearwater, FL 33760

P: 727-539-7275 / F: 727-216-8947

www.roboticparking.com

info@roboticparking.com

